

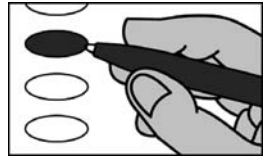
Sample Ballot
Wake County, North Carolina
November 5, 2024

B0098



BALLOT MARKING INSTRUCTIONS

- A. With the marking device provided or a black ball point pen, completely fill in the oval to the left of each candidate or selection of your choice as shown.
- B. Where authorized, you may write in a candidate by filling in the oval and writing the name on the Write-in line.
- C. If you tear, deface or wrongly mark this ballot, return it to request a replacement.



PARTISAN ELECTIONS		
President and Vice President of the United States (You may vote for ONE)	NC Auditor (You may vote for ONE)	NC Court of Appeals Judge Seat 15 (You may vote for ONE)
<input type="radio"/> Kamala D. Harris <i>Democratic Party</i> <input type="radio"/> Chase Oliver Mike ter Maat <i>Libertarian Party</i> <input type="radio"/> Jill Stein Rudolph Ware <i>Green Party</i> <input type="radio"/> Randall Terry Stephen E. Broden <i>Constitution Party</i> <input type="radio"/> Donald J. Trump JD Vance <i>Republican Party</i> <input type="radio"/> Cornel West Melina Abdullah <i>Justice for All Party</i> ----- Write-in	<input type="radio"/> Bob Drach <i>Libertarian Party</i> <input type="radio"/> Jessica Holmes <i>Democratic Party</i> <input type="radio"/> Dave Boliek <i>Republican Party</i>	<input type="radio"/> Chris Freeman <i>Republican Party</i> <input type="radio"/> Martin E. Moore <i>Democratic Party</i>
	NC Commissioner of Agriculture (You may vote for ONE)	NC State Senate District 18 (You may vote for ONE)
	<input type="radio"/> Sean Haugh <i>Libertarian Party</i> <input type="radio"/> Sarah Taber <i>Democratic Party</i> <input type="radio"/> Steve Troxler <i>Republican Party</i>	<input type="radio"/> Terence Everitt <i>Democratic Party</i> <input type="radio"/> Brad Hessel <i>Libertarian Party</i> <input type="radio"/> Ashlee Bryan Adams <i>Republican Party</i>
	NC Commissioner of Insurance (You may vote for ONE)	NC House of Representatives District 35 (You may vote for ONE)
	<input type="radio"/> Natasha Marcus <i>Democratic Party</i> <input type="radio"/> Mike Causey <i>Republican Party</i>	<input type="radio"/> Evonne S. Hopkins <i>Democratic Party</i> <input type="radio"/> Michael Oakes <i>Libertarian Party</i> <input type="radio"/> Mike Schietzelt <i>Republican Party</i>
NC Commissioner of Labor (You may vote for ONE)	NC District Court Judge District 10A Seat 2 (You may vote for ONE)	
<input type="radio"/> Luke Farley <i>Republican Party</i> <input type="radio"/> Braxton Winston II <i>Democratic Party</i>	<input type="radio"/> Vartan A. (Woofer) Davidian III <i>Republican Party</i>	
NC Secretary of State (You may vote for ONE)	NC District Court Judge District 10A Seat 3 (You may vote for ONE)	
<input type="radio"/> Elaine Marshall <i>Democratic Party</i> <input type="radio"/> Chad Brown <i>Republican Party</i>	<input type="radio"/> Cindy Kenney <i>Democratic Party</i>	
NC Governor (You may vote for ONE)	NC Superintendent of Public Instruction (You may vote for ONE)	Wake County Register of Deeds (You may vote for ONE)
<input type="radio"/> Mark Robinson <i>Republican Party</i> <input type="radio"/> Mike Ross <i>Libertarian Party</i> <input type="radio"/> Vinny Smith <i>Constitution Party</i> <input type="radio"/> Josh Stein <i>Democratic Party</i> <input type="radio"/> Wayne Turner <i>Green Party</i>	<input type="radio"/> Maurice (Mo) Green <i>Democratic Party</i> <input type="radio"/> Michele Morrow <i>Republican Party</i>	NONPARTISAN ELECTIONS
NC Lieutenant Governor (You may vote for ONE)	NC Treasurer (You may vote for ONE)	Wake County Soil and Water Conservation District Supervisor (You may vote for ONE)
<input type="radio"/> Rachel Hunt <i>Democratic Party</i> <input type="radio"/> Wayne Jones <i>Constitution Party</i> <input type="radio"/> Hal Weatherman <i>Republican Party</i> <input type="radio"/> Shannon W. Bray <i>Libertarian Party</i>	<input type="radio"/> Wesley Harris <i>Democratic Party</i> <input type="radio"/> Brad Briner <i>Republican Party</i>	<input type="radio"/> Brian K. Lewis <input type="radio"/> Reese Wamsley <input type="radio"/> Mark Boone ----- Write-in
NC Attorney General (You may vote for ONE)	NC Supreme Court Associate Justice Seat 6 (You may vote for ONE)	REFERENDA
<input type="radio"/> Jeff Jackson <i>Democratic Party</i> <input type="radio"/> Dan Bishop <i>Republican Party</i>	<input type="radio"/> Jefferson G. Griffin <i>Republican Party</i> <input type="radio"/> Allison Riggs <i>Democratic Party</i>	Constitutional Amendment
	NC Court of Appeals Judge Seat 12 (You may vote for ONE)	Constitutional amendment to provide that only a citizen of the United States who is 18 years of age and otherwise possessing the qualifications for voting shall be entitled to vote at any election in this State.
	<input type="radio"/> Tom Murry <i>Republican Party</i> <input type="radio"/> Carolyn Jennings Thompson <i>Democratic Party</i>	<input type="radio"/> For <input type="radio"/> Against
	NC Court of Appeals Judge Seat 14 (You may vote for ONE)	Continue voting next side →
	<input type="radio"/> Ed Eldred <i>Democratic Party</i> <input type="radio"/> Valerie Zachary <i>Republican Party</i>	

	Wake County, North Carolina	November 5, 2024	Ballot Style B0098
	Wake County Public Libraries Bonds		
	<p>Additional property taxes may be levied on property located in the County of Wake, North Carolina in an amount sufficient to pay the principal and interest on bonds if approved by the following ballot question.</p> <p>Shall the order adopted on July 8, 2024, authorizing \$142,000,000 LIBRARY BONDS of the County of Wake, North Carolina, plus interest, for the purpose of providing funds, together with any other available funds, for acquiring, constructing, expanding and renovating library buildings and other library facilities, both fixed and mobile, and the acquisition of related land, rights of way and equipment, and providing that additional taxes may be levied in an amount sufficient to pay the principal of and interest on said bonds be approved, in light of the following:</p> <p>(1) The estimated cumulative cost over the life of said bonds, using the highest interest rate charged for similar debt over the last 20 years, would be \$217,884,800, consisting of the \$142,000,000 principal amount of said bonds plus \$75,884,800 of estimated interest.</p> <p>(2) The estimated amount of property tax liability increase for each one hundred thousand dollars (\$100,000) of property tax value to service the cumulative cost over the life of said bonds would be \$2.50 per year.</p> <p><input type="radio"/> Yes</p> <p><input type="radio"/> No</p>		
	End of Ballot		

SAMPLE BALLOT
SAMPLE BALLOT
SAMPLE BALLOT
SAMPLE BALLOT
SAMPLE BALLOT
SAMPLE BALLOT
SAMPLE BALLOT
SAMPLE BALLOT
SAMPLE BALLOT
SAMPLE BALLOT
SAMPLE BALLOT
SAMPLE BALLOT
SAMPLE BALLOT
SAMPLE BALLOT
SAMPLE BALLOT
SAMPLE BALLOT
SAMPLE BALLOT
SAMPLE BALLOT
SAMPLE BALLOT
SAMPLE BALLOT
SAMPLE BALLOT
SAMPLE BALLOT
SAMPLE BALLOT
SAMPLE BALLOT
SAMPLE BALLOT
SAMPLE BALLOT

SAMPLE BALLOT
SAMPLE BALLOT
SAMPLE BALLOT
SAMPLE BALLOT
SAMPLE BALLOT
SAMPLE BALLOT
SAMPLE BALLOT
SAMPLE BALLOT
SAMPLE BALLOT
SAMPLE BALLOT
SAMPLE BALLOT
SAMPLE BALLOT
SAMPLE BALLOT
SAMPLE BALLOT
SAMPLE BALLOT
SAMPLE BALLOT
SAMPLE BALLOT
SAMPLE BALLOT
SAMPLE BALLOT
SAMPLE BALLOT
SAMPLE BALLOT
SAMPLE BALLOT
SAMPLE BALLOT
SAMPLE BALLOT
SAMPLE BALLOT
SAMPLE BALLOT